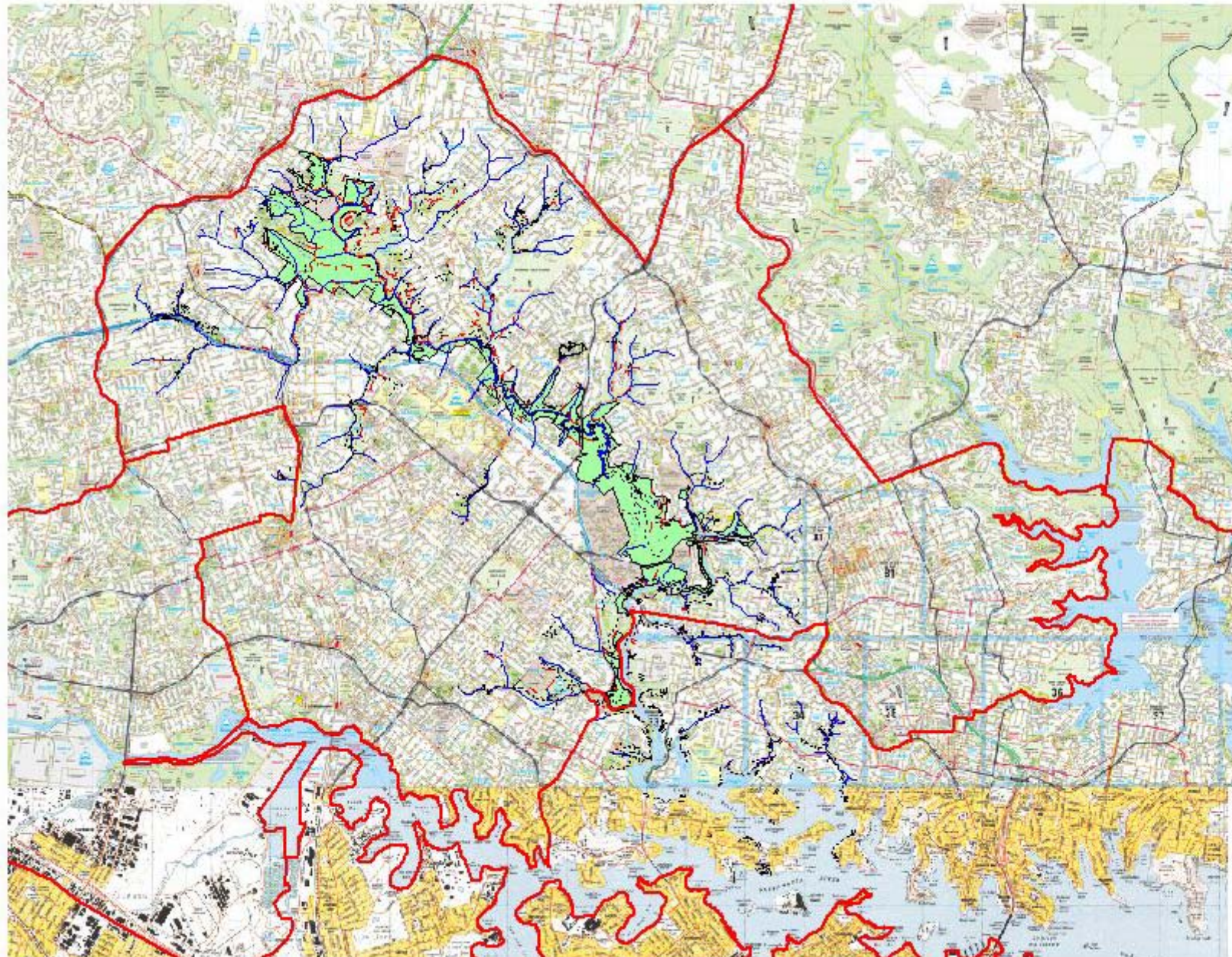


Plan of Management Preparation 2009

Lane Cove Plan of Management



View1



Department of
Environment and Conservation
Copyright Department of Environment and Conservation (DEC)
This map is not a guarantee of accuracy and does not constitute
a Department of Environment and Conservation (DEC) or
State liability for any loss or damage arising from its
use, except as stated in the conditions of sale.

- Municipality
- ▭ Township boundary
- ▭ State boundary
- ▭ Council area
- ▭ Local road, unimproved road, strip, road, pedestrian
- ▭ State road, unimproved road, strip, road, pedestrian
- ▭ Right of way
- ▭ Footpath
- ▭ Drain
- ▭ Pipeline
- ▭ Railway
- ▭ Other railway
- ▭ Other road
- ▭ Other boundary

0 576 662 Meters



23 November 2004

g:\work\bas\l\basoon.rmp

Need for a Plan?

- **The current plan of management for the Lane Cove National Park was due for review as of 2003. A POM audit was conducted in 2004.**

The aim of a Plan of Management is to:

- **Direct the management actions for the park that are consistent with the management objectives for the park and the statutory framework under which it operates i.e. Legislation, Policy, Strategies, Plans.**



A Legal Document

- **Plans of management are important statutory documents, that is, they are required by and prepared in accordance with the Act, in this case the *National Parks and Wildlife Act 1974* (NPW Act).**
- **“no operations shall be undertaken in relation to the lands to which the plan relates unless the operations are in accordance with that plan” (Section 81)**
- **If not prepared in accordance with the Act, a plan can be challenged in the Land and Environment Court.**



Why are you here?

Benefits:

- promotes the NPWS role in conservation, and appropriate use of parks and reserves in general;
- fosters public understanding of the issues and acceptance of the management solutions set out in a plan
- educates all involved in the process, including NPWS staff, so that everyone acquires a more complete understanding of the issues and how other parties see the issues
- provides a means through which the public can make positive and meaningful contributions to the decision-making process
- builds a stronger and improved relationship between the NPWS and the community.



POM Process

- project management – establish steering committee (see below), project manager, brief and program for preparation of plan
- **internal and external involvement in pre-exhibition plan preparation**
- public exhibition of the draft PoM
- review of public comments
- ministerial adopt of the PoM
- publication
- amendment if necessary



Project Time Frame

| DATE | ACTIVITY |
|-------------------|---|
| 3 June | SNR Advisory Committee presentation |
| 16 July | Meeting 1 External stakeholders working group |
| 18 Aug | Community Meeting |
| September-October | Draft PoM to RM for approval (3 week process) |
| October | Draft media release ready Website text ready Reproduction of PoM quote Draft posters for exhibition points |



Project Timeframe

| | |
|------------------------|---|
| November | Draft PoM to director for approval |
| December | Ministerial Approval to Publicly Exhibit. |
| Jan – Mar 2010 | Public exhibition Process 90 Days |
| April- May 2010 | Review Comments and adoption of POM |





NSW National Parks
and Wildlife Service

Department of Environment & Climate Change NSW



Community Consultation

- **Group 1- Internal Stakeholders- DECC employees. Already met in Feb 09**
- **Group 2- External Stakeholders- Community Interest Groups, Council, Metro Land Council.**
- **Group 3-Community, general public, neighbours, park users**



External Stake Holders

- Sydney Metropolitan Wildlife Service *
- Ryde Hunters Hill Progress Society *
- STEP Inc
- Ryde, Hunters Hill Flora and Fauna Society*
- Ryde Environment Group *
- Guardians of Lane Cove NP *
- Sydney North Region Advisory Committee *
(project manager briefing 3 June)
- Friends of Lane Cove Inc*
- Ku-ring-gai Bat Conservation Society *
- Sydney Metropolitan Wildlife Service
- Blue Gum High Forest Group*
- Ku-rin-gai Historical Society *
- Frog Hollow *
- Bass Fishing Sydney*
- Hornsby Mountain Bike Association *
- Sydney Cycle Assoc*
- Chatswood Progress Society *
- Chase Alive Discovery Program *
- Boat Shed lessee *
- Ryde, Hunters Hill, Willoughby, Hornsby and Ku-ring-gai Councils
- Metropolitan Local Aboriginal Land Council
- National Parks Association
- Macquarie University
- UTS- Ku-rin-gai
- Ryde TAFE
- NSW Fisheries (DPI)
- NSW Maritime
- Sydney Water
- Energy Australia
- National Parks Association
- RTA (Downer EDI)
- Canoe and Boat clubs *
- Sydney Striders*
- Jenkins, Tunks, Turnbridge, Bakers, Schwartz, Swann family descendents
- Formal bushwalking groups *





Issues in New Plan

- **Managing the recent Ryde and Pennant Hills Additions**
- **Kukundi-Shifting focus to an interpretation centre. Investigate the establishment of an Aboriginal and Cultural heritage interpretative facility**
- **Jenkins Kitchen-Adaptive re-use as an interpretative centre.**
- **Future direction of Kiosk and Jenkins Hall building..**
- **Low impact wilderness style fixed tent camping below the Tourist Park Grounds and low impact walk in camping in the Scribbly Gums Picnic area.**
- **Climate Change, Revenue Raising, ESD**



Ongoing Issues

- **River health, water quality, The Weir- Stay or Go?**
- **Pest Management- Weeds and Feral animals**
- **Picnic Areas.**
- **Walking Tracks.**
- **Visitor Use-Recreational Users, Picnickers, Neighbours**
- **Research**
- **Biodiversity Management E.g. additions, Threatened species, monitoring**
- **Cultural Heritage**
- **Fire Management**
- **Community Education**
- **Infrastructure-roads, transmission lines, easements**





NSW National Parks
and Wildlife Service

Department of Environment & Climate Change NSW



Making a Submission

- **Submissions can be made while the draft plan is on exhibition for 90 Days**
- **The draft will be on display at relevant DECC and NPWS offices, public libraries, and the NPWS website.**
- **Electronically or Written.**



What happens to the submissions (representations)?

- 1. Sequentially numbered and entered into a register. Receipt of your submission will be acknowledged in writing.**
- 2. NPWS review of representations on an issue by issue basis.**
- 3. Summary of issues-All issues raised are included. Issues are grouped together as sub-issues and a NPWS response is written.**
- 4. Goes to Regional Advisory Committee for review.**



What happens to submissions? Continued...

- **Regional Advisory Committee recommendation for each issue. May endorse NPWS recommendation or disagree.**
- **Submitted via the Regional Manager and planning coordinators (Branch and PWG) to be considered by the Management Planning Subcommittee of the advisory council.**
- **Advisory Council's recommendations are referred back to Regional Advisory Committee.**
- **Ministerial adoption of the plan. Adopt the plan without alteration or with such alterations as the minister may think fit.**



A Good Representation.

- **Issues specific to the park**
- **Concise and relevant to the process**
- **One message per point**
- **Under the Statutory Framework under which we operate e.g. NPW Act 1974, TSC Act 1995, PWG Policies, Fire Management Strategy, Burra Charter.**





NSW National Parks
and Wildlife Service

Department of Environment & Climate Change NSW



Examples

- **9. Lane Cove Council**
- **9.3 Plan does not include sufficient information on weed control and bush regeneration, a weed plan and review of bush regeneration programs should be undertaken as a priority**
- **9.4 Weed control should be a high not medium priority**



Response

- **Summary-Lane Cove Council says the plan does not include sufficient information on weed control and bush regeneration, a weed plan and review of bush regeneration programs should be undertaken as a priority.**
- **Discussion- A weed plan has been identified as a high priority and is about to be started. More detail on areas and procedures for weed control will be included in the weed plan. As mentioned in the plan the main sources of weeds are outside the park and there are limits on how much the Service can do in these areas, including controlling stormwater.**



Irrelevant Submission

- **We shouldn't have to pay fees in national parks- Broader context of pay and display across the state.**
- **Do something about the wild pigs-not relevant, there are no feral pigs in Lane Cove Valley.**
- **More funding for bush regeneration alternative: weed control should be a spending priority or you should investigate funding opportunities for weed control**
- **We should have more fishing platforms along Lane Cove Weir- currently a fishing closure at Lane Cove Weir.**



How do I make it relevant?

- Read the old plan.
- Get familiar with Statute under which we operate e.g. acts, policies etc
- A plan of management is visionary
- Is it referred to or just a another boring piece of red tape?



Plan of Management overview

- **Clear directions for the sustainability and protection of our park's values e.g. biodiversity, heritage, water quality, recreational area and research opportunities.**
- **Is the proposal compromising the park's values?**
- **Part 1 2A cl 2 The objects of this Act are to be achieved by applying the principles of ecologically sustainable development. Implications for the future/intergenerational equity, meets the needs of the present without compromising the needs of the future. NP&W 1974. Thinking long term?**
- **Precautionary principle, Potential risk. Eg. REF process, Scientific certainty or lack of.**



Review process is every five years? May call for a new plan to be written, it may not.

- **Can something be permitted that is contradictory to the plan or not included in the plan? Amendment process.**

